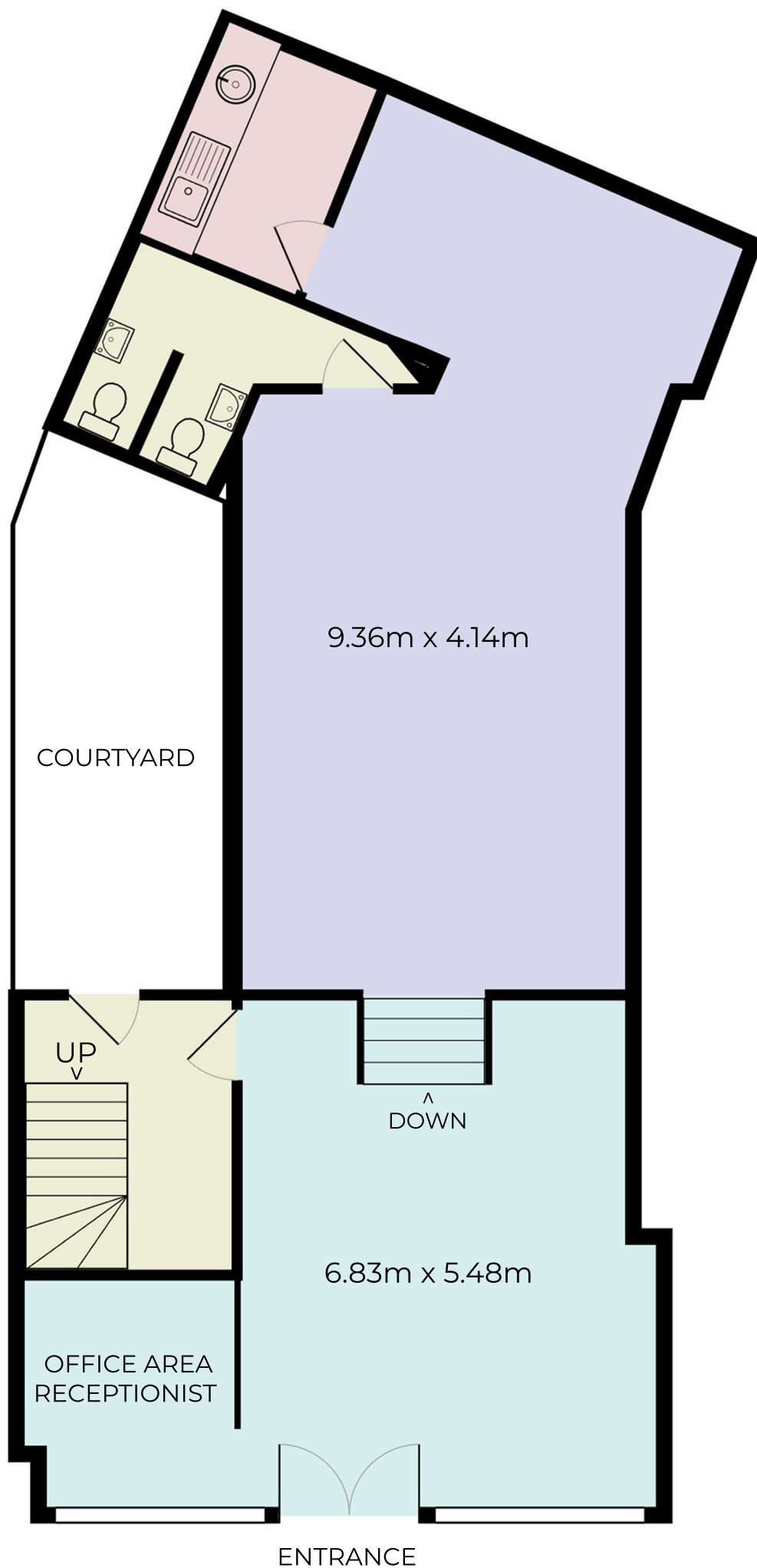


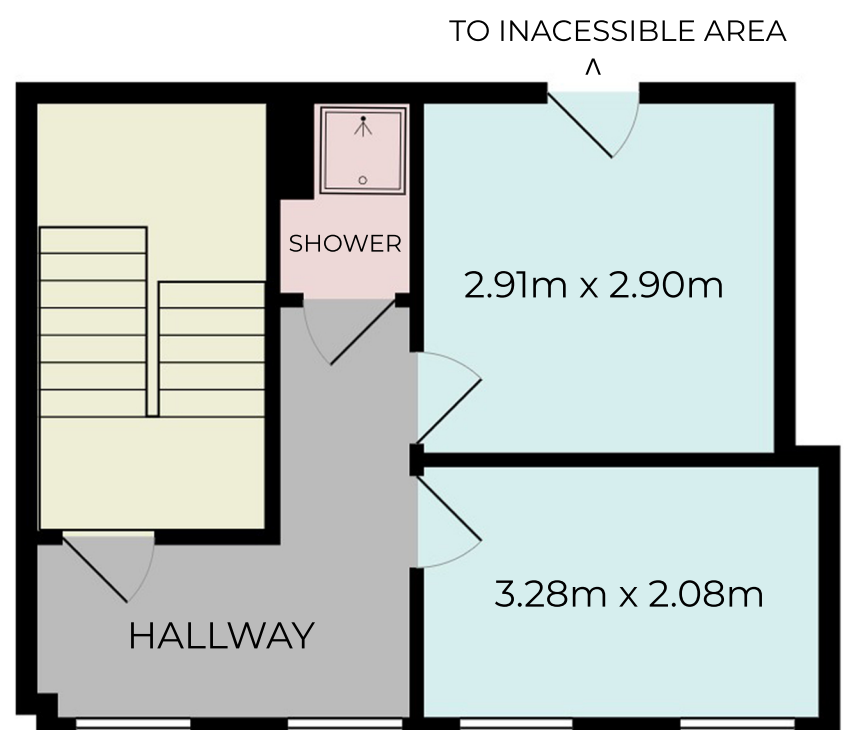
Surrey Street, Croydon CR0

1,309 ft² / 121.5m²

Approximate Total Internal Space



GROUND FLOOR
84.3m² / 908ft²



FIRST FLOOR
37.2m² / 401ft²

Disclaimer: This floor plan is not to scale and is intended for marketing purposes only. Whilst every attempt has been made to ensure accuracy of this floor plan, measurements are approximate and no responsibility is taken for any error, omission, or misstatement. This floor plan is for illustrative purposes only and should only be used as a guide by prospective tenants or purchasers.