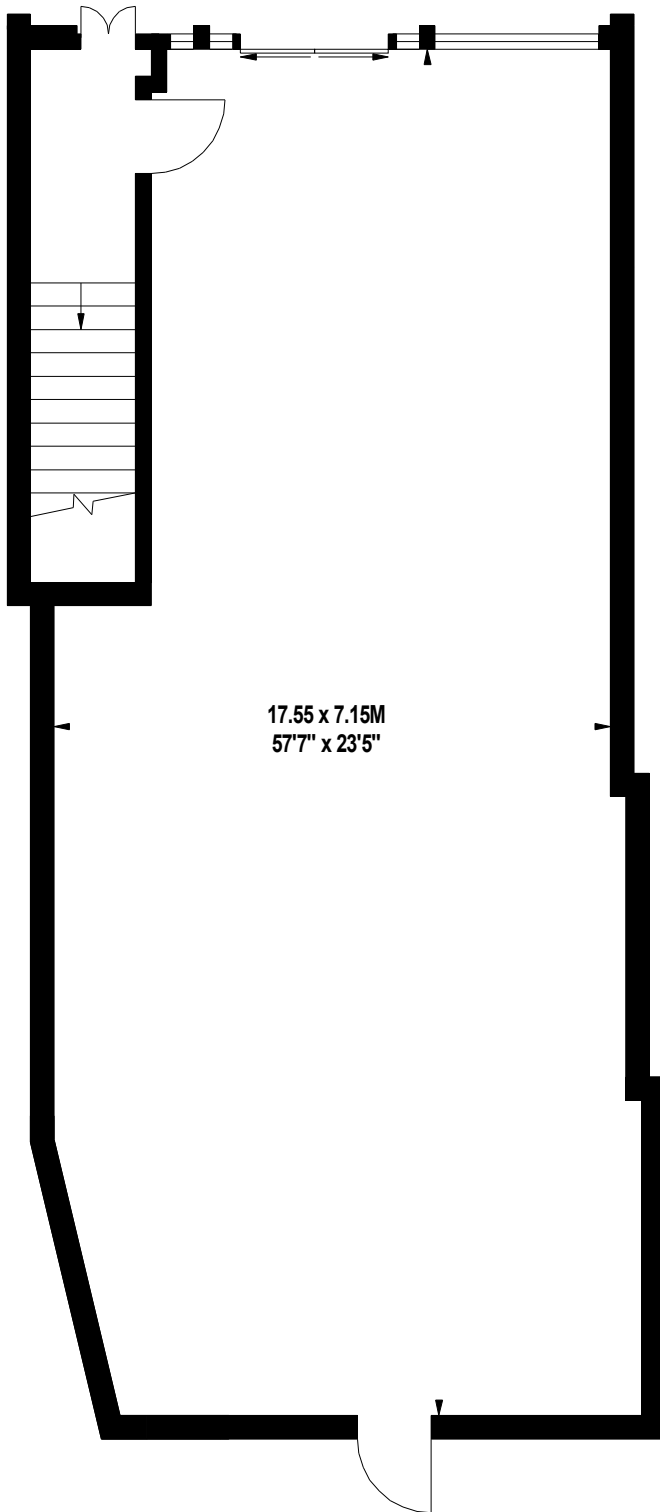


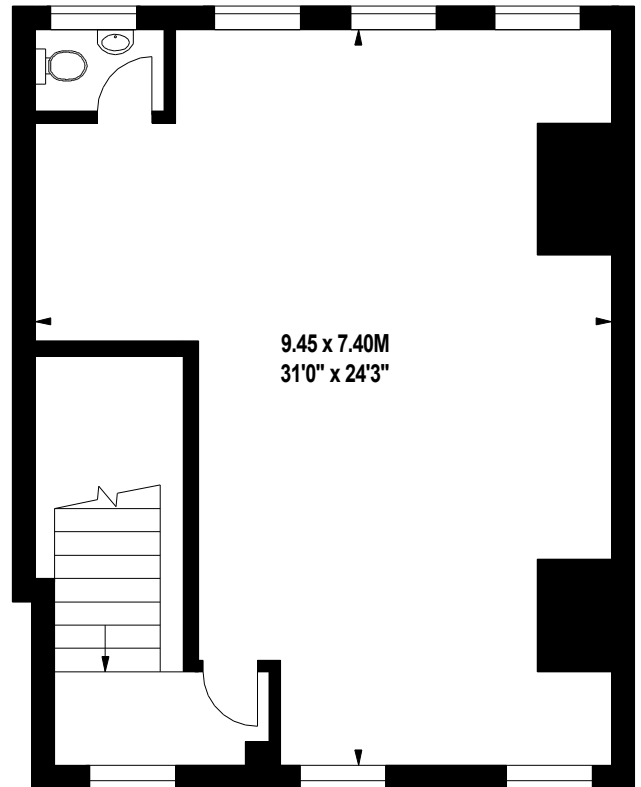
# High Street, SE9

Approximate gross internal area

197.69 sq m / 2128 sq ft



1382 sq ft  
**Ground Floor**



746 sq ft  
**First Floor**

The floor plan is not to scale and measurements and areas shown are approximate and therefore should be used for illustrative purposes only. The plan has been prepared in accordance with the RICS code of Measuring Practice and whilst we have confidence in the information produced, it must not be relied on.

If there is any aspect of particular importance, you should carry out or commission your own inspection of the property.

Copyright of Stu J Beesley.