

Proposed Ground Floor Plan

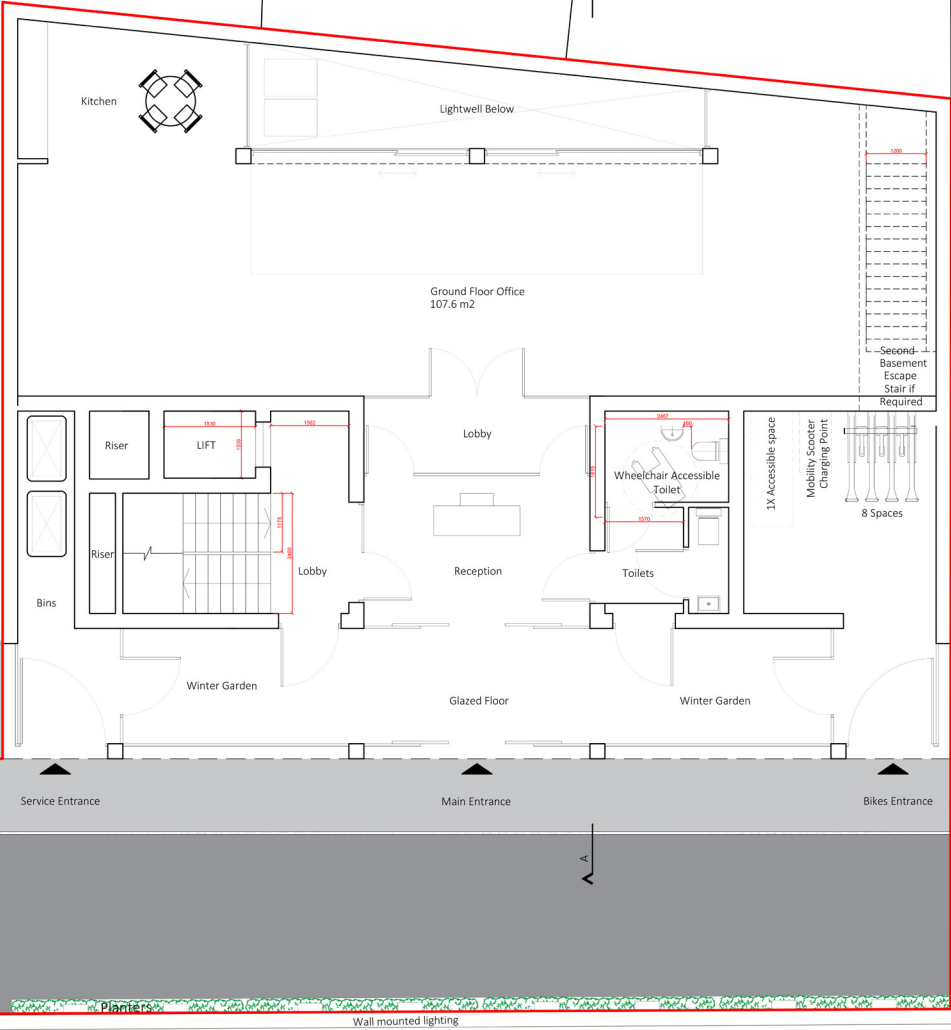
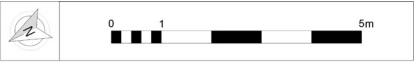
74b

73

72

71

70



L	2022.07.25	Planning Amendments - Boundary Line	KS	DC
K	2021.04.12	Revised for Inclusive Design	LL	DC
J	2021.03.30	Revised for Inclusive Design	LL	DC
I	2020.12.11	Scheme Updated for Planning	KS	DC
H	2020.11.05	Scheme Updated for Planning	KS	DC
G	2020.10.14	Scheme Updated for Planning	LL	DC
F	2020.07.28	Plant Equipment	BP	DC
E	2020.05.15	Revised for Inclusive Design	DC	DC
D	2019.06.13	Revised for Inclusive Design	DC	
C	2019.04.11	Final Planning Issue	BP	DC
B	2019.03.26	Revised for Planning Issue	BP	...
A	2018.10.22	Pre Application	MT	BP

rev.	date	description	revised by	audited by
stage		drawing title		
PLANNING		Proposed Ground Floor Plan		



**LIPTON
PLANT
ARCHITECTS**

Seatem House
39 Moreland St
London
EC1V 8BB

Client:
Mr. H. Hirsch
Grays Road
Investment LTD
London N16 5NF

Project:
The Alban Building
St Alban's Place
London
N1 0NX

THIS DRAWING IS COPYRIGHT

scale
1:50@A1
1:100@A3

date issued
2018.10.31

drawn by
MT

audited by
DC

drawing no.
528.00.1.002

revision
L

CONTRACTORS ARE NOT TO SCALE DIMENSIONS FROM THIS DRAWING

T +44 (0)20 7288 1333
F +44 (0)20 7288 0333
E email@larchitects.co.uk
W www.larchitects.co.uk