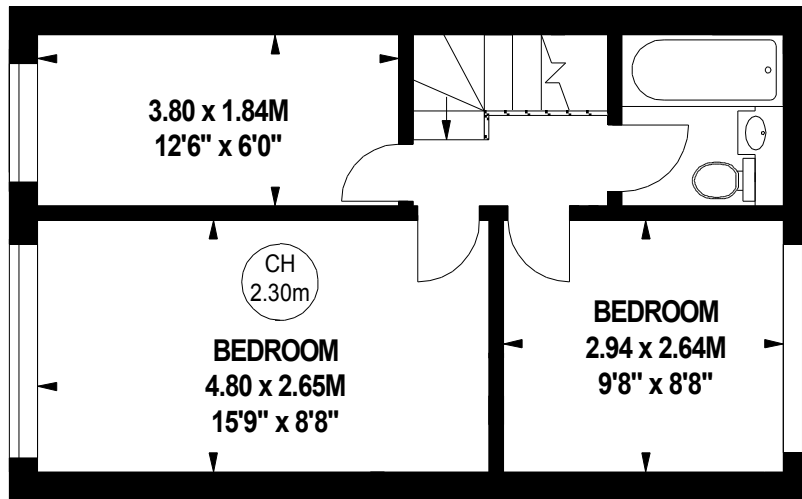
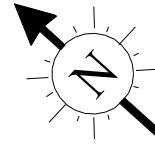


Victoria Road, RM1

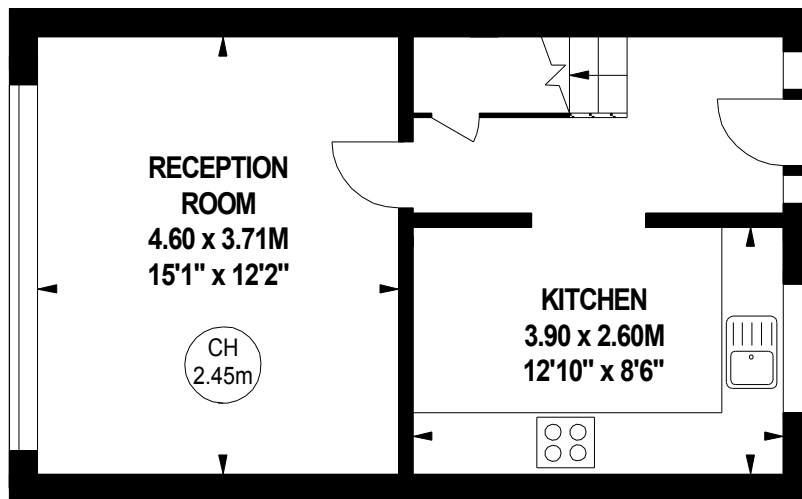
Approximate gross internal area

72.09 sq m / 776 sq ft

Key :
CH - Ceiling Height



388 sq ft
Second Floor



388 sq ft
First Floor

The floor plan is not to scale and measurements and areas shown are approximate and therefore should be used for illustrative purposes only. The plan has been prepared in accordance with the RICS code of Measuring Practice and whilst we have confidence in the information produced, it must not be relied on.

If there is any aspect of particular importance, you should carry out or commission your own inspection of the property.

Copyright of Stu J Beesley.