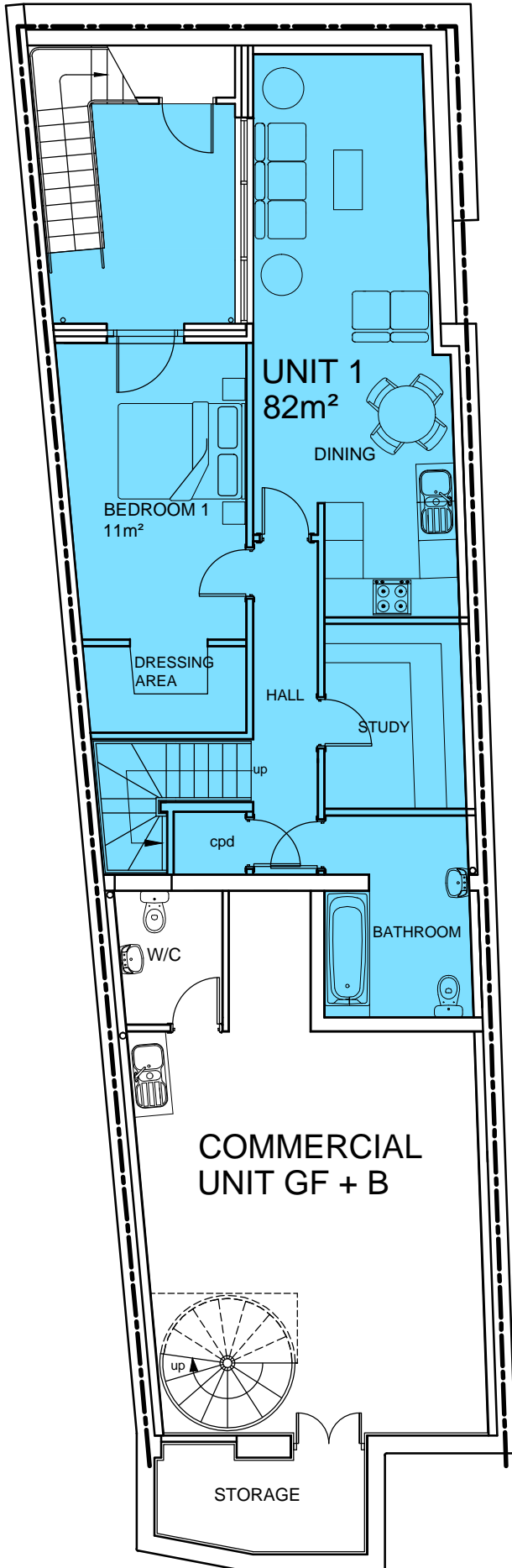
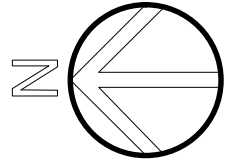
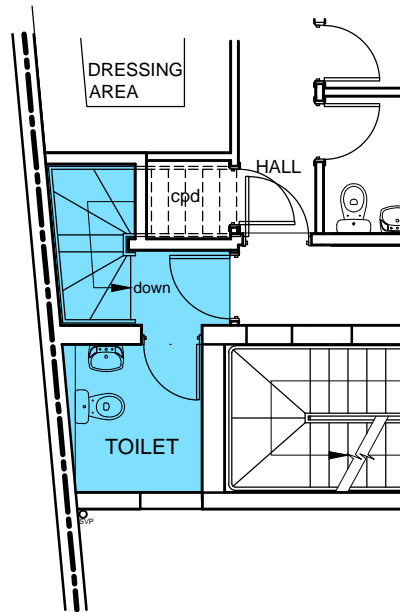


notes

1. No dimensions are to be scaled from this drawing.
2. ALL DIMENSIONS ARE TO BE CHECKED ON SITE BY THE CONTRACTOR PRIOR TO COMMENCEMENT.



BASEMENT FLOOR PLAN - RESIDENTIAL UNIT 1



PART GROUND FLOOR PLAN - RESIDENTIAL UNIT 1

rev. description

by date



Refurbishment and Extension at
18 Stoke Newington Road
London
N16 7XN

Basement
Floor Plan

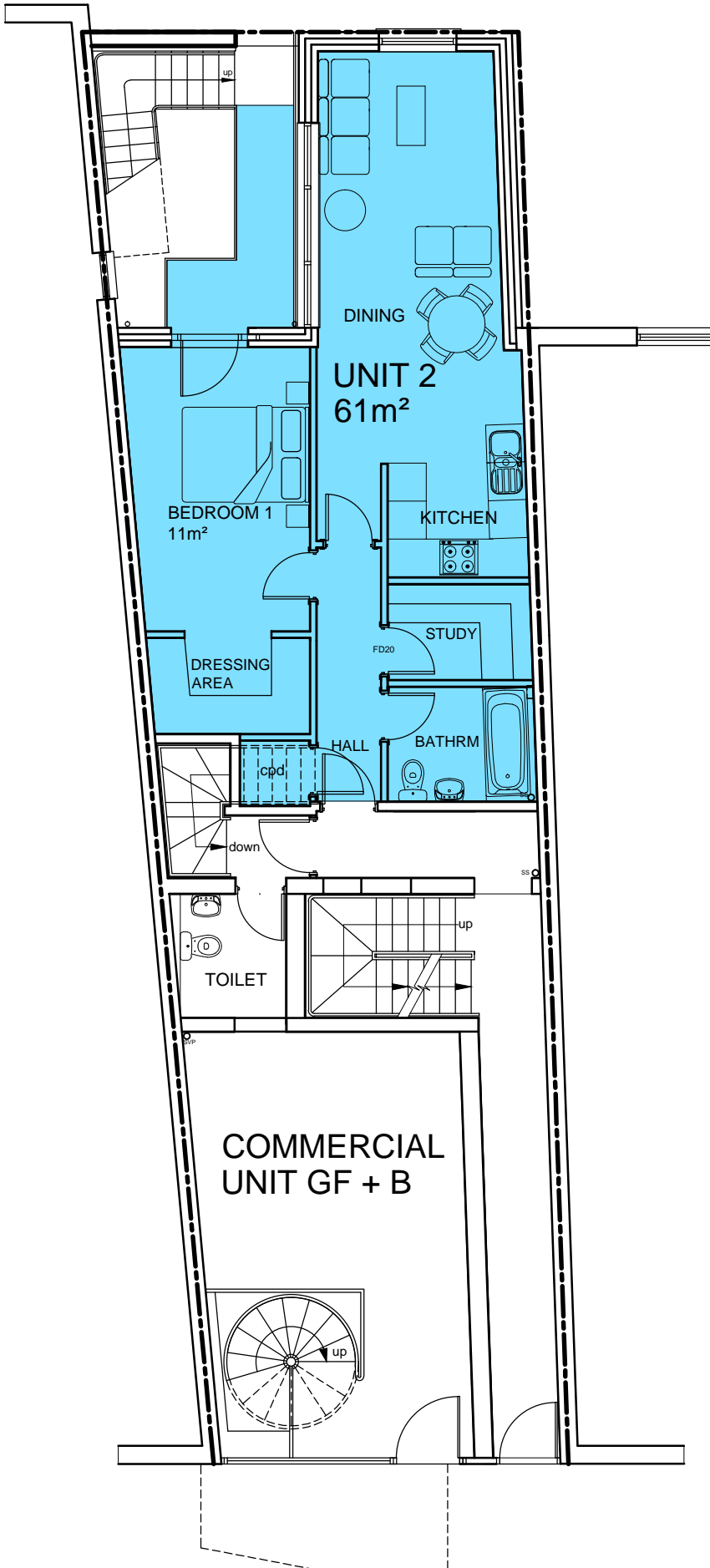
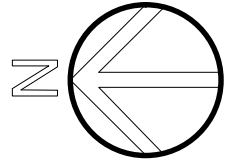
scale 1:100 drawn IRMB date Feb 2020

GEN 549 (L) 003

rev. *

notes

1. No dimensions are to be scaled from this drawing.
2. ALL DIMENSIONS ARE TO BE CHECKED ON SITE BY THE CONTRACTOR PRIOR TO COMMENCEMENT.



rev. description

by date
GENESIS
 Architects + Designers

Refurbishment and Extension at
 18 Stoke Newington Road
 London
 N16 7XN

Ground
 Floor Plan

scale 1:100 drawn IRMB date Feb 2020

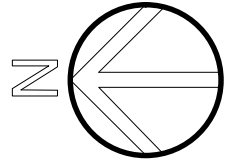
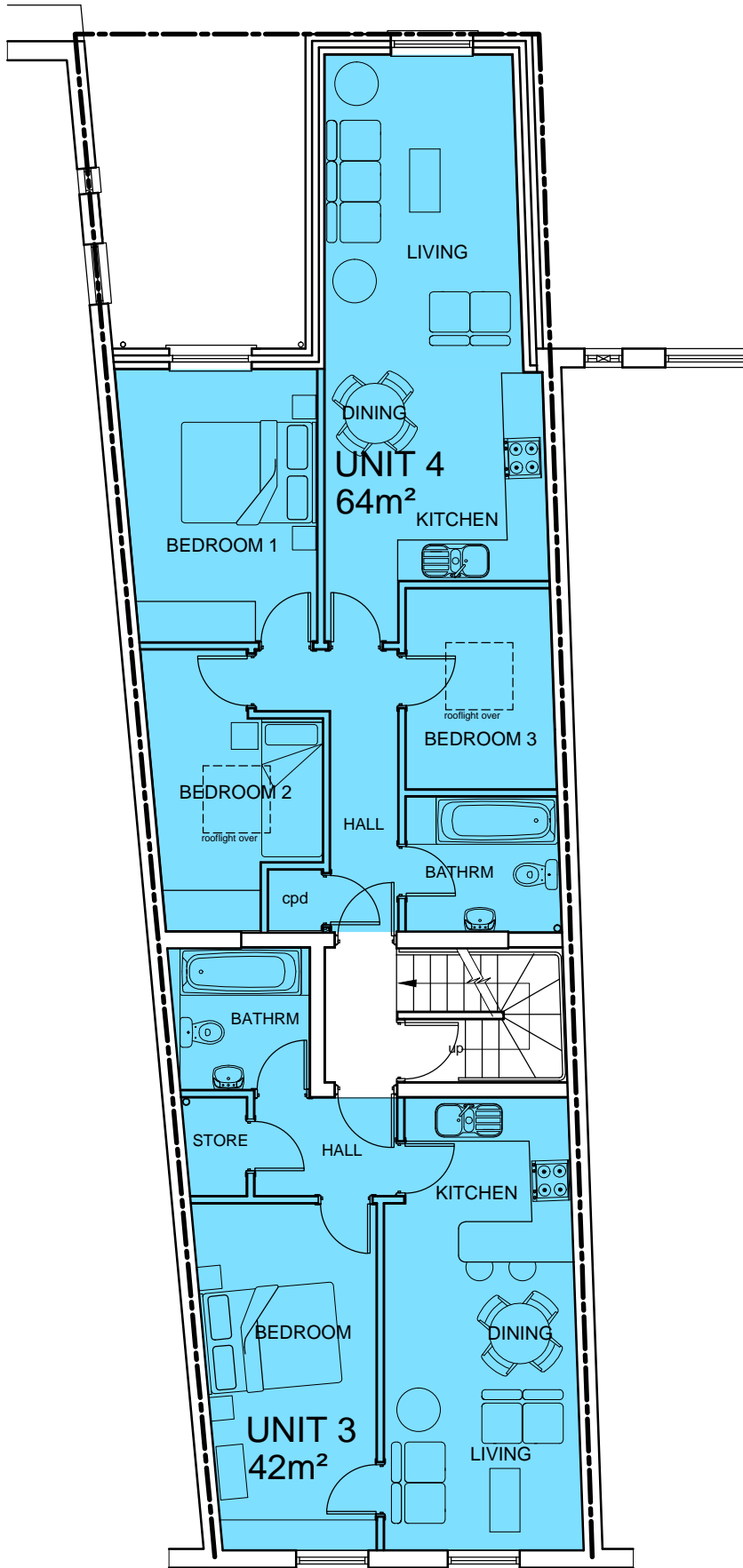
GEN 549 (L) 004

rev. *

GROUND FLOOR PLAN - RESIDENTIAL UNIT 2

notes

1. No dimensions are to be scaled from this drawing.
2. ALL DIMENSIONS ARE TO BE CHECKED ON SITE BY THE CONTRACTOR PRIOR TO COMMENCEMENT.



FIRST FLOOR PLAN - RESIDENTIAL UNITS 3&4

rev. description

by date



Refurbishment and Extension at
18 Stoke Newington Road
London
N16 7XN

First
Floor Plan

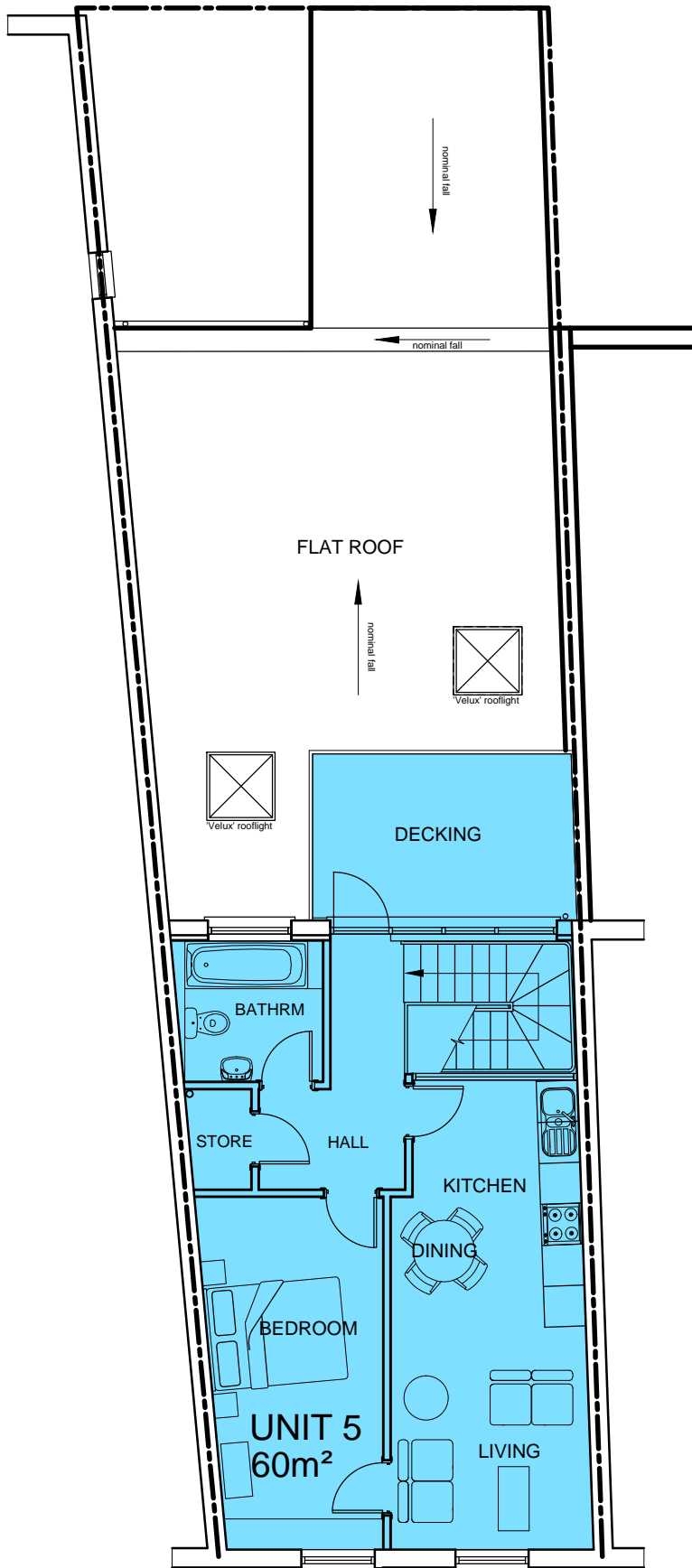
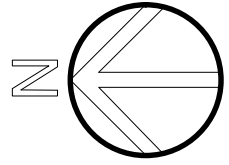
scale 1:100 drawn IRMB date Feb 2020

GEN 549 (L) 005

rev. *

notes

1. No dimensions are to be scaled from this drawing.
2. ALL DIMENSIONS ARE TO BE CHECKED ON SITE BY THE CONTRACTOR PRIOR TO COMMENCEMENT.



rev. description

by date
GENESIS
 Architects + Designers

Refurbishment and Extension at
 18 Stoke Newington Road
 London
 N16 7XN

Second
 Floor Plan

scale 1:100 drawn IRMB date Feb 2020

GEN 549 (L) 007

rev. *

SECOND FLOOR PLAN - RESIDENTIAL UNIT 5